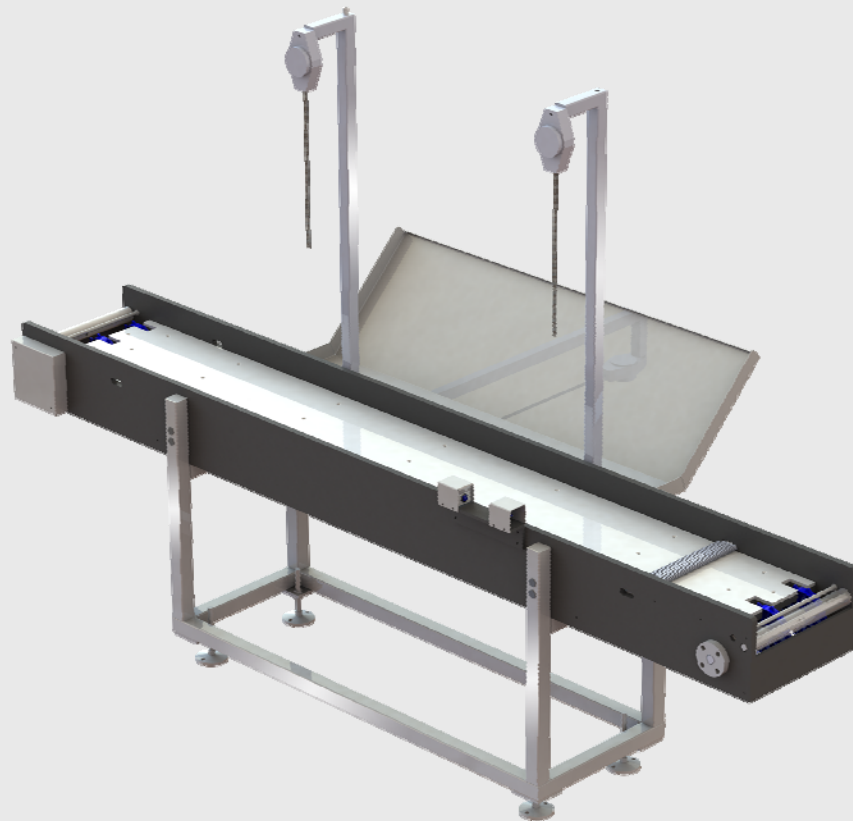


ECO PLUG INSERTION WORKPLACE UNIT

Technology
[made in Germany]

Semi automatic plug insertion of single screwing plugs for automotive car and truck batteries, incl. CMWTEC tool and screwing technology



The Advantage:

- Complete unit with conveyor system
- CMWTEC Screwing technology with tools individually designed for different plug types on request.
- Screwing with pneumatic screwdriver or electronic screwdriver available
- Buffer for different plug cardboards

Basic unit

The basic unit accommodates the individual components and contains the pneumatic and electric control system of the unit. The basic structure accommodates the Screwing unit which is mounted in the centre of the conveyor and the plate for buffer storage plug cardboard.

Screwing unit

The screwing unit houses the balancer on a pillar to allow an ergonomic handling of the the electronic / or pneumatic screwdriver.

Screwing tool

The tools are individually design for plugs based on the specification and adapted to the electric / or pneumatic screwdriver to guarantee a smooth and tight screwing of the plugs.

Battery positioning unit

For screwing the operator can manually stop the conveyor so that the plugs can be screwed into the battery

Battery conveyor unit

A PP chain in a PP body transports the batteries through the unit and laterally guide the battery
The conveyor can be stopped manually by the operator at any time.

Description of function

The unit can be used for screwing single plugs into batteries with 1 x 6 and 2 x 6 holes. The individual batteries supplied through the conveyor of the insertion unit are stopped by manual enable a light barrier
The screwing module, which is hanging on a balancer, lowered onto the battery for screwing the single plugs with an electronic screwdriver or with a pneumatic screwdriver. By adding a second screwdriver and balancer the unit can be operated with two operators at the same time.

Technical specifications

Battery type	:	automotive car and truck batteries
Plug type	:	individually designed according customer spec.
Capacity	:	up to 6 batteries/min, (depending on the operator)
Weight of batteries	:	20 – 70 kg
Dimension of machine	:	L = 3000 mm W = 400 mm H =850 mm
Construction	:	Stainless steel 316 feet, with PP Conveyor
Electric	:	230/400V, 3-Phase, 50/60 Hz, 4 Wire
Control voltage	:	24 DC
Power consumption	:	1,0 kW
Operating pressure	:	6 bar (90 psi) [by pneumatic screwdriver version]