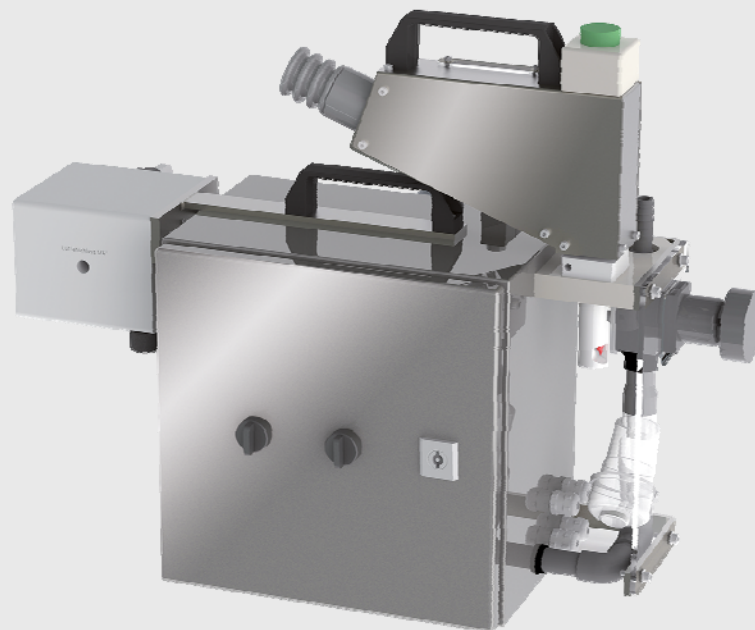


# SEMI AUTOMATIC HANDHELD FILLING UNIT

Technology  
[made in Germany]

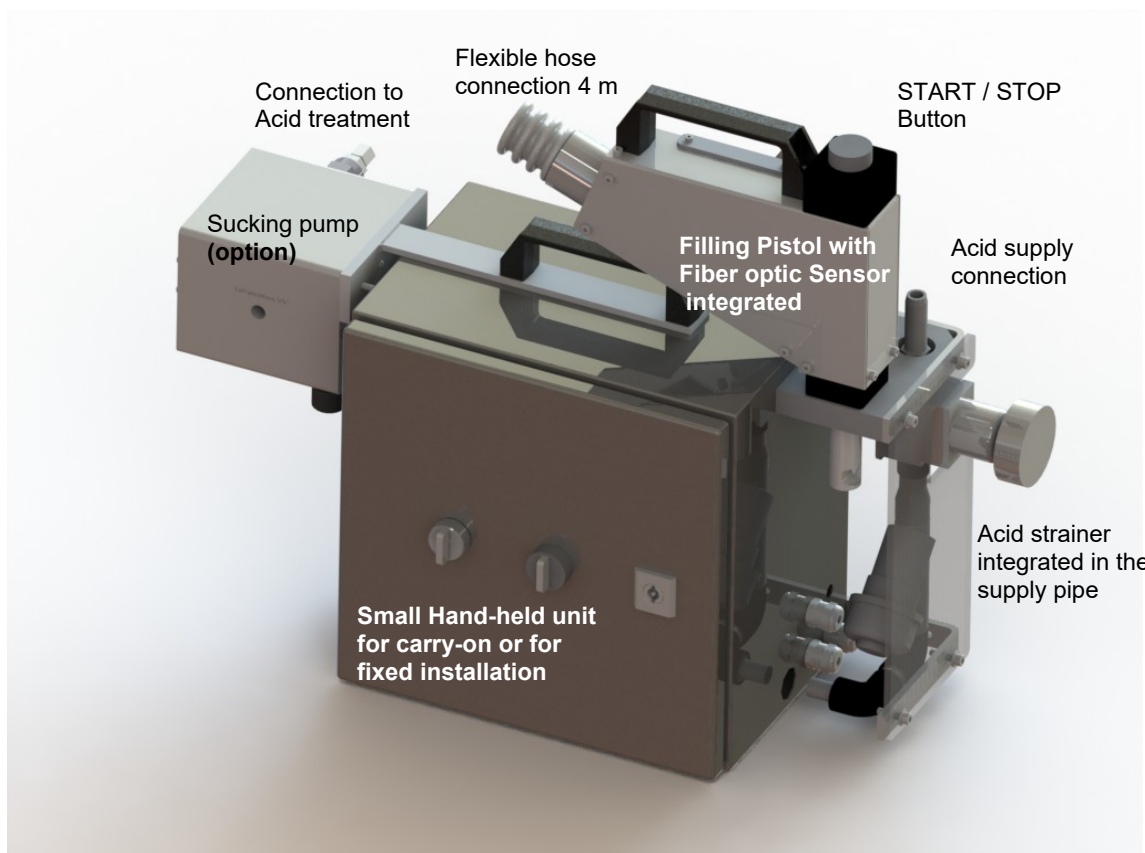
Efficient levelling with the Handheld unit with optional suction function before levelling with best and high technology



## The Advantage:

- Filling or/and levelling, with suction
- High precision levelling by Fiber optic monitoring
- No Acid overflow
- Clean filling, no dripping
- No change-over time
- 100% acid resistance

Schematic shows Semiautomatic Acid Filling Pistol with Membrane suction pump Application (option)



**Description of function**

This machine was designed and developed for the purpose of filling industrial batteries with sulphuric Acid. The volume of Acid to be filled in is monitored by a precise Fiber optic sensor integrated in the filling nozzle. The filling nozzle can be adjusted according to the final level of the battery type. The filling unit contains the PLC controllers and the electrical components. Whenever the Fiber optic sensor detect the acid the valve is immediately closing the supply unit to prevent an overfilling and dripping after filling. With optional membrane pump the unit can be used to check the final level in a battery cell and to suck off the higher acid level to the final level.

**Technical specifications**

Battery type	:	industrial batteries, traction cells
Capacity by filling with gravity	:	1 – 3 liter /min (pressure-dependent)
Capacity by filling with pump	:	8 – 15 liter /min (pump speed-dependent)
Filling level	:	+/- 1,5 mm of the final level
Weight of the unit	:	17,5 kg
Dimension of basic machine	:	L = 400 mm W = 210 mm H = 400 mm
Dimension of Filling pistol	:	L = 200 mm W = 50 mm H = 150 mm
Construction	:	Full acid proof Material, Stainless steel 316Ti Plastic PP and PVDF Pieces not acid resistant with special protection
Electric	:	230V, 1-Phase, 50/60 Hz, 4 Wire
Control voltage	:	24 DC
Power consumption	:	-- kW
Operating pressure (by suction pump option)	:	6 bar (90 psi)